

# COCOONING IN CHICAGO

Nine interior design firms have put their stamp on a series of sophisticated interiors as part of the Sixth Annual DreamHome.

Unveiled during a charity gala in spring and running until December 10, this year's DreamHome project offers nine rooms, including an outdoor setting, with the theme of "Cool Elegance." Furnished through the luxury showrooms of the Merchandise Mart Design Center™ and with some help from local craftsmen and other resources,

the spaces reflect an eclectic mix of updated traditional and contemporary elements. Abandoning over-the-top decoration, the rooms are a catalyst for experimentation with newer materials while incorporating collections and possessions that may have been acquired over time.

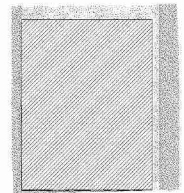
This year, designers have been

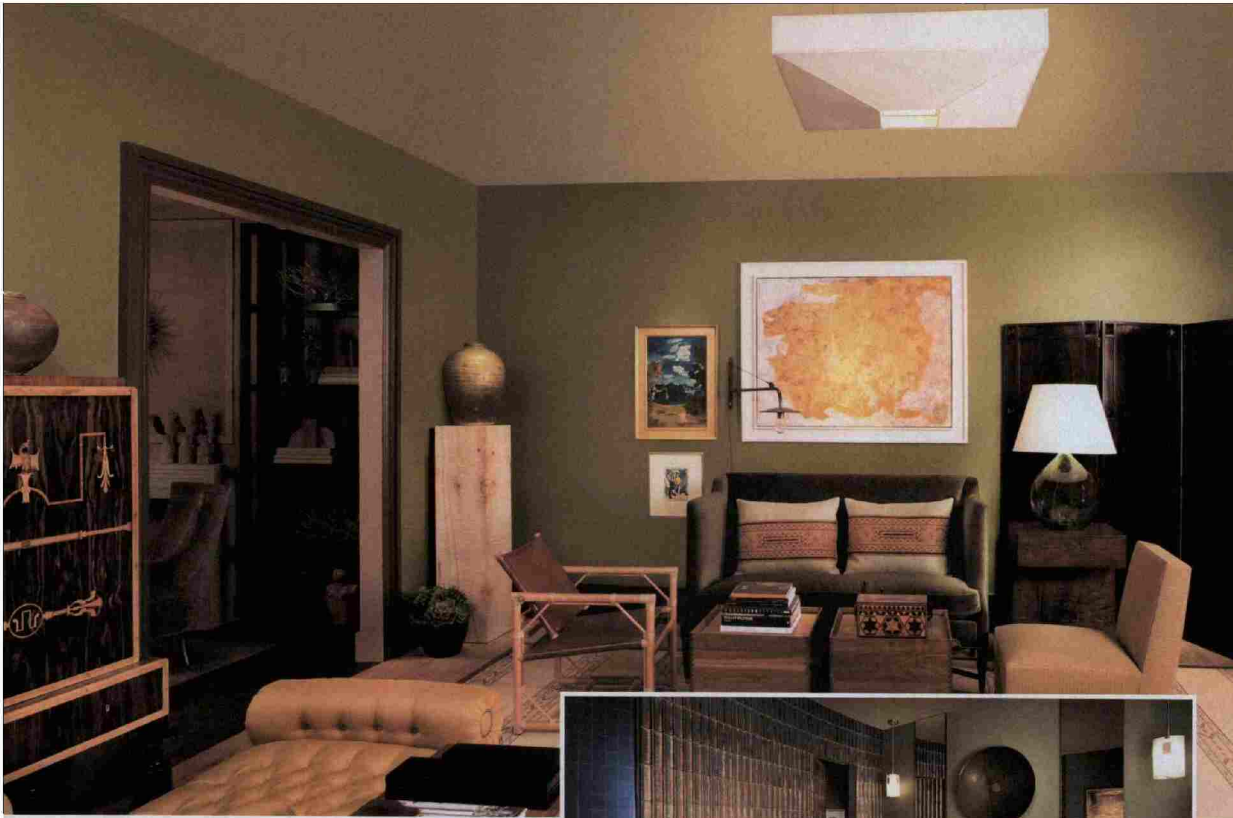
asked to employ an eco-friendly item in their plans in keeping with the Mart's green initiatives. Antiques are used to personalize some areas, reflecting the oldest form of recycling. Fabrics and many wall coverings are composed of natural materials; even the display track

*(continued on page 70)*

## LAYER IT ON!

The foyer of the Merchandise Mart's DreamHome is a mix of old and new with layers of pattern, texture, and color. The 40"-diameter Tronchi Italian glass chandelier makes a dramatic statement and sets the tone for unexpected elegance. A table of curiosities, abstract-scale furniture, and contemporary artwork present a unique take on traditional style. Other lamps and lighting in the room are supplied by Summer Thornton, the Chicago-based designer of the space.

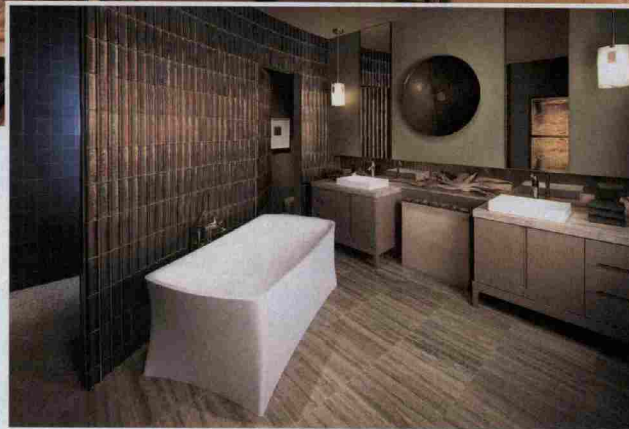




**A COLLECTION OF DESIGN INFLUENCES**

Despite the living room's theme of a sanctuary for an avid art collector, Alex Jordan and Dan Smieszny of Gregga Jordan Smieszny chose a rich mossy green for walls, a colorful backdrop over the more typical white as the background. With such a hue, it would have been difficult for the designers to pass up the antique wine flask at the Mike Bell showroom. A little special help from A Lamp & Fixture, one of designers' favorite Chicago resources for lamp repair and wiring as well as for shades, and the perfect accessory is born. The Kazan overhead pendant is by Satori Light Sculptures of Los Angeles, represented in Chicago by Charles Pollock Showrooms. Westwater Patterson is the representative for the swing arm floor lamp from Phoenix Day, also of Los Angeles.

Many of the furniture pieces are inspired by Danish and Swedish designers with other items heralding from the 1930s.



**A REFUGE INJECTED WITH TEXTURE**

No doubt designer William Collins of The Kohler® Store had plenty to choose from to deck out this showhouse bath. Tile and stone provide subtle color and lots of variations. The curved wall dissecting the room is sheathed in iridescent bamboo-like tiles. It offers interesting geometry as well as providing space for the large shower area with its mosaic floor and walls of moody blue tiles at one end, and a doorway leading to the water closet at the other. The floor's linear pattern is created from Ann Sacks® Palladium, an Italian travertine with a warm silver cream coloration and soft blue-gray ribbon veining. While the overall concept is to create a cocoon of calm, the space's quiet palette is illuminated by two Aspen pendants from Boyd Lighting.

*(continued from page 68)*

lighting in the DreamHome is energy efficient. Sustainability and efficiency, however, do not exclude design excitement, as these rooms prove. A mix of accessories injects personality into the settings and

lighting – even LEDs in some cases – is specified for drama.

If retailers didn't catch Cool Elegance during the summer Chicago market, they have another chance during this month's Chicago Market Living and Giving®, September 20-

22, running concurrently with the International Casual Furniture and Accessories Market™, September 21-24. Admission is free, but a voluntary donation of \$5 benefits the University of Chicago Cancer Research Foundation.

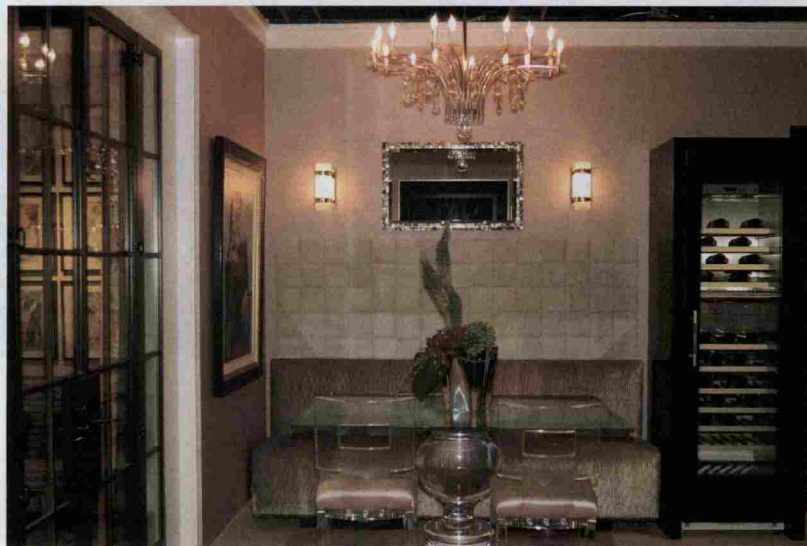


**GLAMOUR HAPPENS**

The nightclubs of the 1930s and 1940s as well as fashions of songstresses from the era such as Billie Holiday, Ella Fitzgerald, Sarah Vaughn, and Lena Horne inspired Lisa Simeone and Gina Deary to create this alluring dining room. Sparkle and sheen come together with the dramatic 43"-diameter Hope pendant from LucePlan (sourced through Ingrid Meyer) and sophisticated sheers and ruffled drapes. The dark palette is enhanced with an iridescent feathered wall covering. The mix of seating from satiny cushioned benches to the curved grid of the Black Arete dining chairs keeps the décor lively, as does the light glinting off of crystal in the built-in champagne wall.

**COOK, DINE, ENTERTAIN ELEGANTLY**

Flowing curves and exotic woods create warmth for this heart of the DreamHome. Neff of Chicago designers Patrick Borg, Michelle Gribac, Kate Johnston, and Martin Spicuzza used Dark Olive, English Sycamore, and ebony-stained rift-cut Oak for cabinetry as well as on the curved face of the refrigerator. The twist: a gloss finish. Countertops are capped with light Silestone® in the prep area, while Bulgarian limestone continues the palette to the floor. The circular island is crowned with a translucent quartz gemstone countertop. Lighting includes undercabinet illumination, accents over the display area, plus the Hollywood Hills chandelier from Westwater Patterson and the Molto Luce suspension pendant sourced through Duomo Collection.





**TRANSITIONING TO OUTSIDE**

The outdoor room gets special treatment from the Schmechtig Landscapes & Inex-teriors® team of Michael Schmechtig, Christopher Michaels, and Toni Callahan. The fireplace/entertainment/kitchen island is the centerpiece, offering all the luxuries of indoors. It is fitted with an EcoSmart™ insert and its weather-impervious stone countertops for grilling on one side and dining on the other are illuminated by pendants

sourced through Lightopia, based in Laguna Beach, California. A loosely woven chandelier from Kenneth Ludwig is hung from the pergola over the central seating. The coffee table is from The Phillips Collection, which also supplied the sculpture in the waterfall. That feature incorporates LED accent lighting from Tempo Industries that complements – not competes with – the living area. ❖